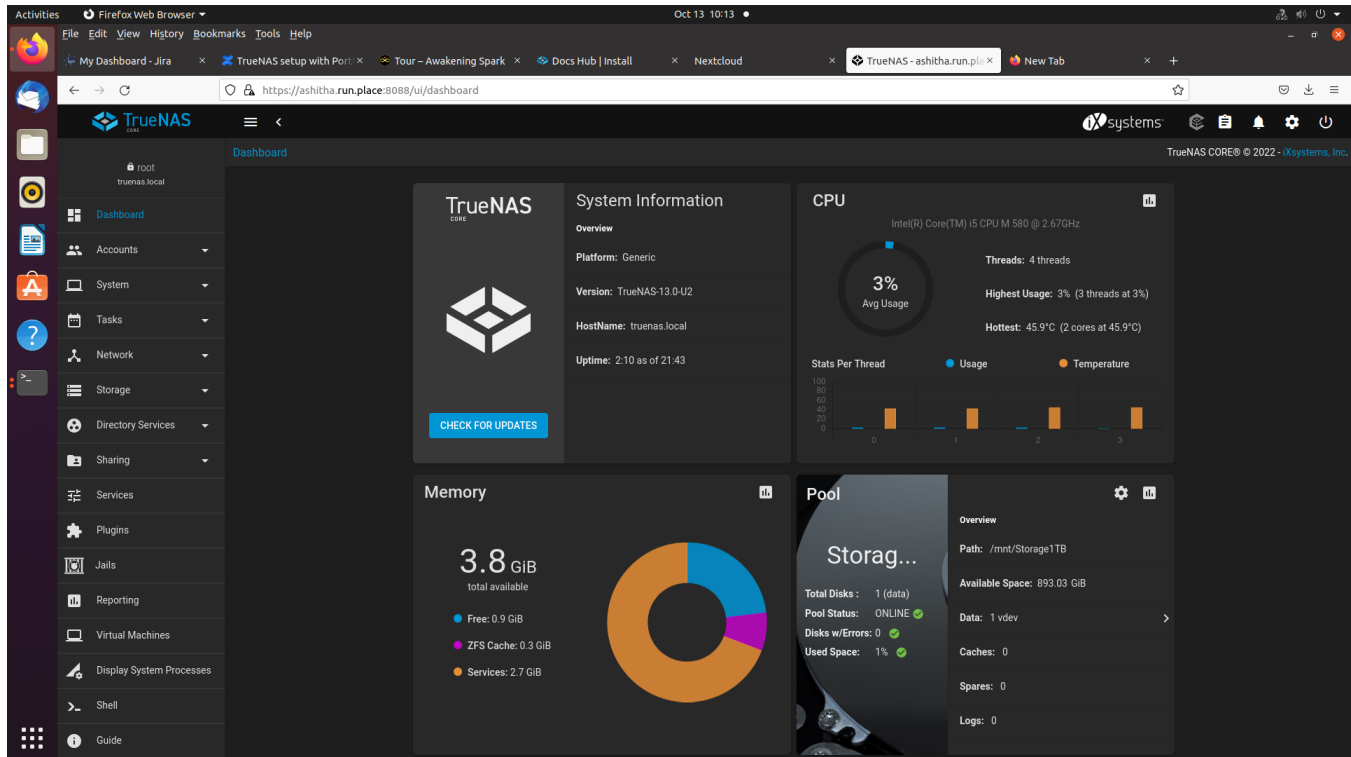


# TrueNAS setup with Portforwarding , SAMBA, WEBDAV, nextcloud



## System requirements:

- 8GB ram (required) but 4GB is enough for minimalist usage
- dual-core, Pentium and higher configurations

## Files to download

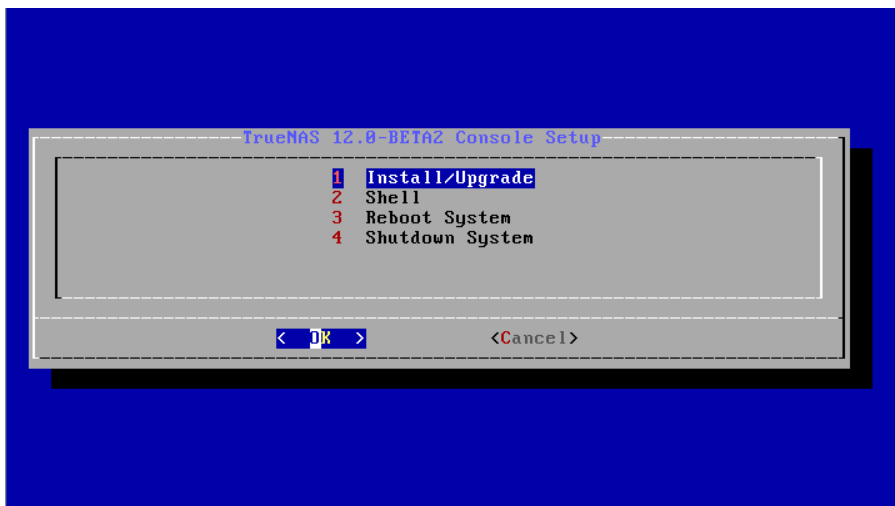
- TrueNAS: <https://www.truenas.com/download-truenas-core/>
- Rufus: <https://rufus.ie/en/>

## Steps to follow:

- Create bootable USB drive of TreNAS.iso using rufus tool

## 1. Install Process

- Boot the pendrive
- Select *Install/Upgrade*.

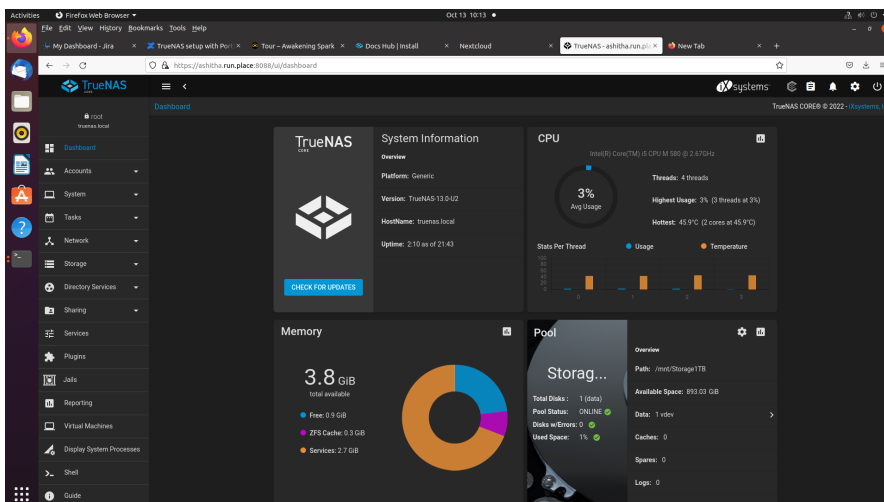


- Select the desired install drive.
- Next, set a password for the TrueNAS administrative account
- After following the steps to install, reboot the system and remove the install media.
- After booting up find the web interface IP address



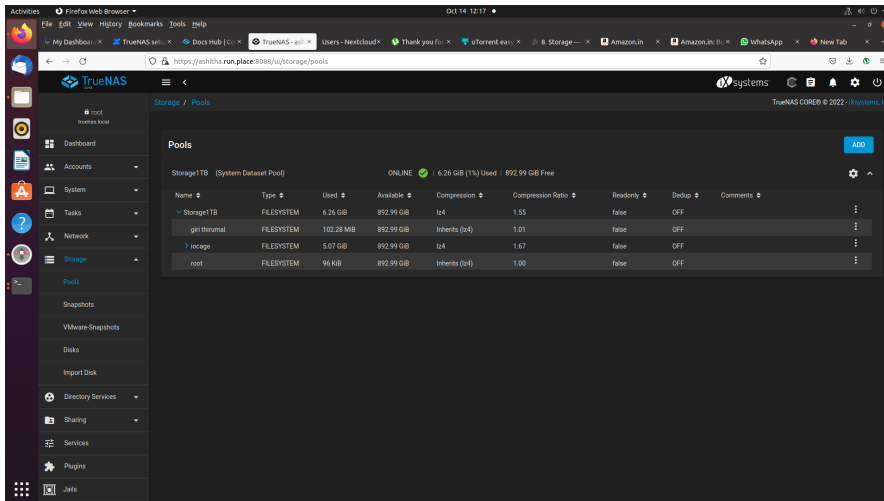
Ex: use <http://10.238.15.194> in same network computer web browser

- The web interface



## 2. Selecting drive for storage and all other needs:

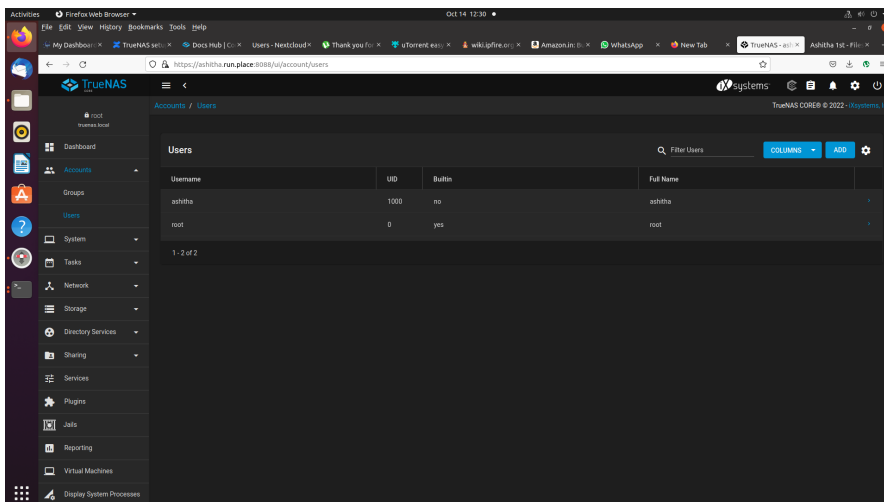
- select storage pools



- Click add and select your drive and mention your desired name for drive  
*caution: it will format your whole drive*

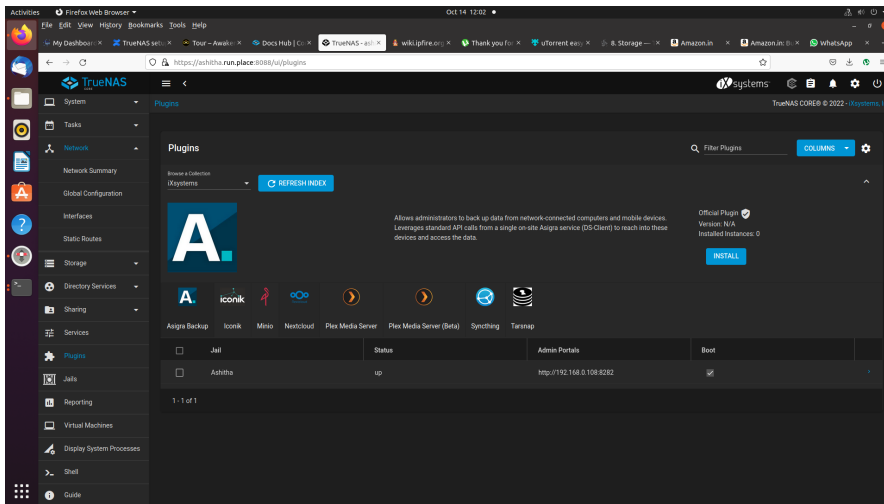
### 3. create a user rather than root

- select Accounts users
- add user
- select all permissions
- select you storage
- select your user groups

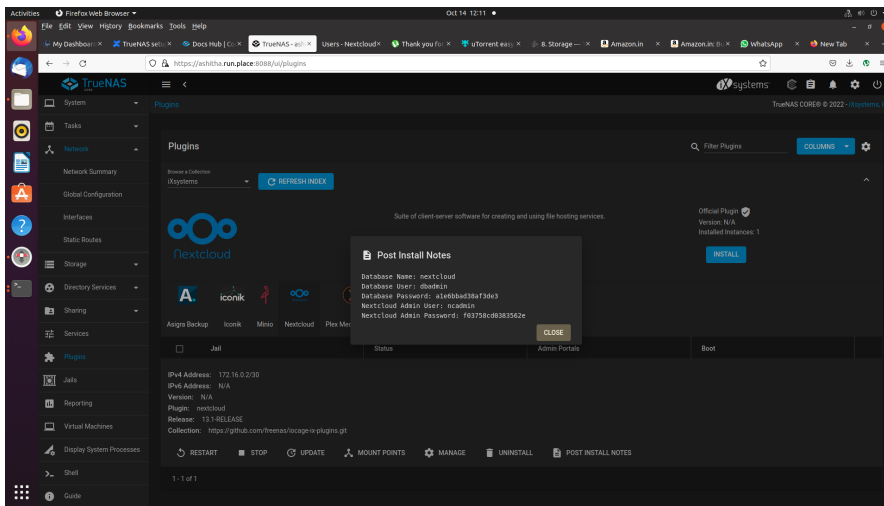


### Nextcloud Install Process

- In TrueNAS nextcloud service is a plugin
- First install it
- you can find it in plugin Nextcloud Install
- un-select NAT and select DHCP



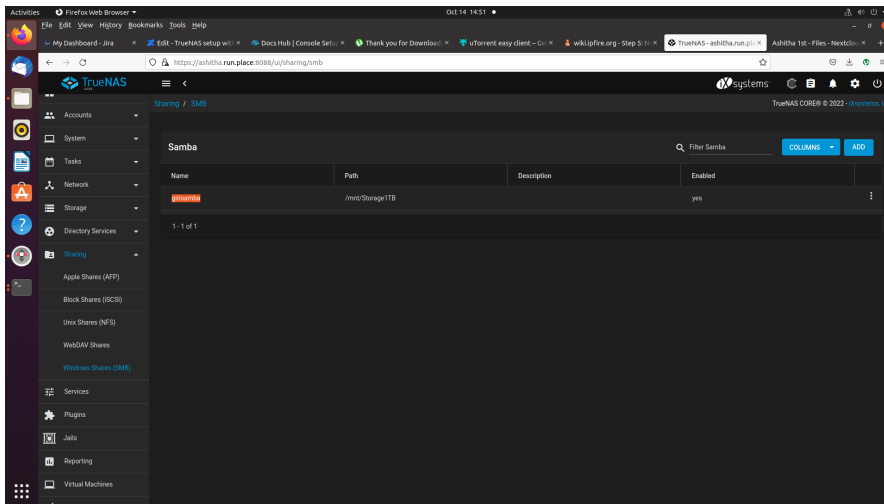
- It takes time 10 - 20 min to finish
- After use the IP-address and port number mentioned in Admin portal column
- username and password will be provided in post install notes - *picture mentioned below*



- use ncadmin and mentioned password to login
- next create newuser for login

## SAMBA share

- select sharing windows share(SAMBA) Add select your pool and provide your name, password and give all permission



### Portforwarding to make your TrueNAS online:

- login router username and password
- select forwarding -> virtual server -> add your TrueNAS IP in IP Address feild
- add 8088 (default) for internal and service port
- select protocol both TCP & UDP and select status enabled
- And save it

